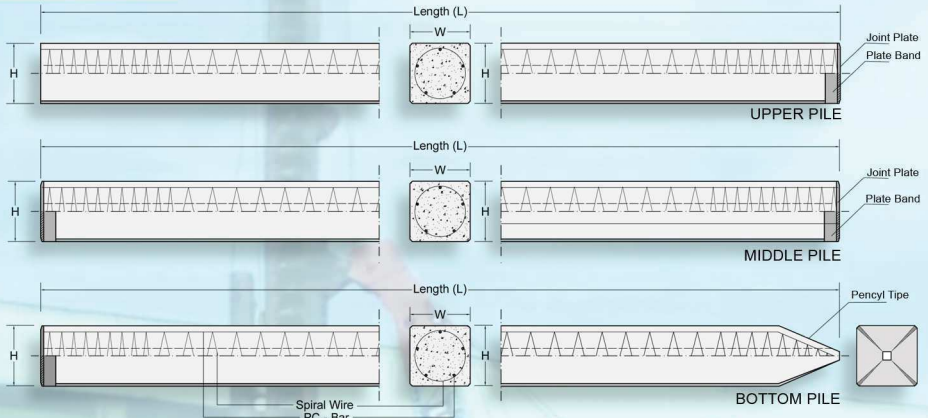


# PRESTRESSED CONCRETE SQUARE PILE

## Shape and Dimension



## Description

Type of pile : Prestressed Concrete Square Pile  
 Splice system : Welded at Steel Joint Plate  
 Type of Shoe : Pencil (Standard Product)  
 Method of Driving : Diesel Hammer, Hydraulic Hammer  
 HSPD (Hydraulic Static Pile Driver)

## Design and Manufacturing References

ACI 543R-00 : Design, Manufacture and Installation of Concrete Pile

## Spesification

Size (mm)	Cross Section (cm <sup>2</sup> )	Unit Weight (Kg/m)	Class	Bending Moment		Allowable Compression (ton)	Length (m)
				Crack (ton.m)	Ultimate (ton.m)		
200 x 200	400	100	A	1.50	2.25	40.0	6
250 x 250	625	150	A	1.90	2.55	80.0	6
			B	2.29	3.46	81.40	6 - 8
300 x 300	900	216	A	3.64	5.19	118.59	6 - 11
			B	3.98	6.23	116.76	6 - 11
			C	4.48	7.47	114.66	6 - 12
			D	4.92	9.34	111.60	6 - 12
350 x 350	1,225	294	A	5.33	6.57	163.98	6 - 11
			B	6.07	8.72	160.68	6 - 12
			C	6.63	10.90	157.45	6 - 12
			D	7.30	13.08	154.32	6 - 13
400 x 400	1,600	384	A	7.89	9.96	213.96	6 - 12
			B	8.71	12.45	210.60	6 - 12
			C	9.51	14.95	207.32	6 - 13
			D	11.82	22.42	198.01	6 - 14
450 x 450	2,025	486	A	11,17	14.01	270.98	6 - 12
			B	12,10	16.81	267.61	6 - 13
			C	13,01	19.62	264.30	6 - 13
			D	14,78	25.22	257.88	6 - 14

\*Compressive strength at 28 days : K-500 Kg/cm<sup>2</sup>