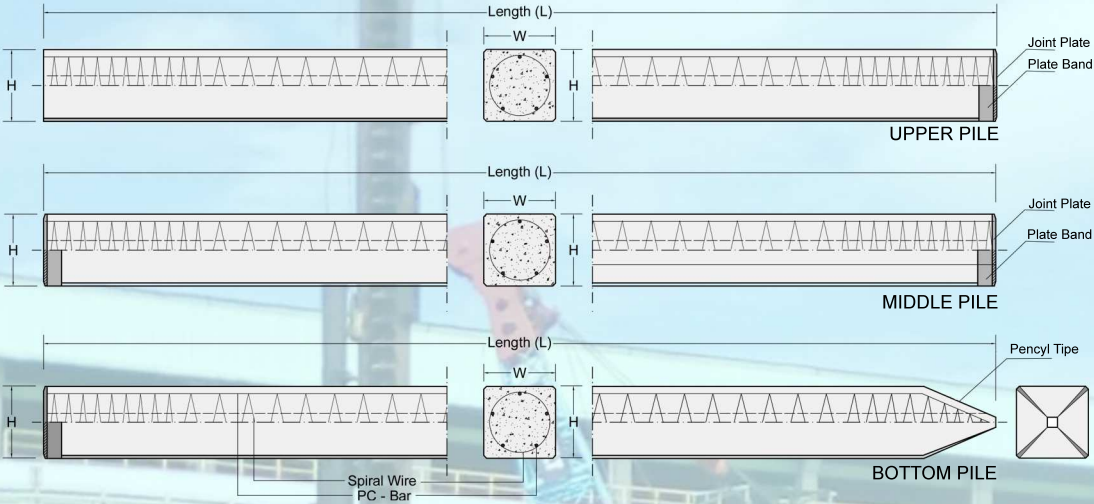


# PRESTRESSED CONCRETE SQUARE PILE

## Shape and Dimension



## Description

- Type of pile : Prestressed Concrete Square Pile
- Splice system : Welded at Steel Joint Plate
- Type of Shoe : Pencil (Standard Product)
- Method of Driving : Diesel Hammer, Hydraulic Hammer  
HSPD (Hydraulic Static Pile Driver)

## Design and Manufacturing References

- ACI 543R-00 : Design, Manufacture and Installation of Concrete Pile

## Spesification

| Type   | Dimension<br>W x H |      | Cross<br>Section | Unit<br>Weight | Bending Moment     |        | Allowable<br>Compression | Length |
|--------|--------------------|------|------------------|----------------|--------------------|--------|--------------------------|--------|
|        | (mm)               | (mm) |                  |                | (mm <sup>2</sup> ) | (kg/m) |                          |        |
| SQ 200 | 200                | 200  | 40.000           | 100            | 1,09               | 1,63   | 52,48                    | 6      |
| SQ 250 | 250                | 250  | 62.500           | 156            | 2,41               | 3,61   | 80,16                    | 6 - 10 |
| SQ 300 | 300                | 300  | 90.000           | 225            | 4,41               | 6,62   | 114,10                   | 6 - 12 |
| SQ 350 | 350                | 350  | 122.500          | 306            | 5,95               | 8,93   | 160,18                   | 6 - 12 |
| SQ 400 | 400                | 400  | 160.000          | 400            | 8,69               | 13,04  | 209,97                   | 6 - 14 |
| SQ 450 | 450                | 450  | 202.500          | 506            | 12,07              | 18,11  | 266,85                   | 6 - 15 |
| SQ 500 | 500                | 500  | 250.000          | 625            | 15,09              | 22,63  | 334,22                   | 6 - 15 |

\*Compressive strength at 28 days : K-500 Kg/cm<sup>2</sup>